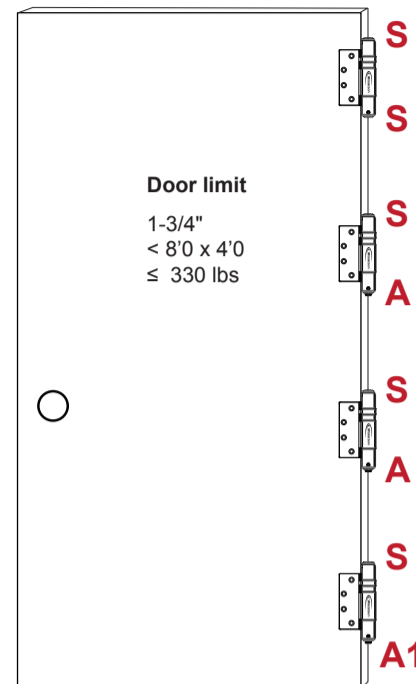
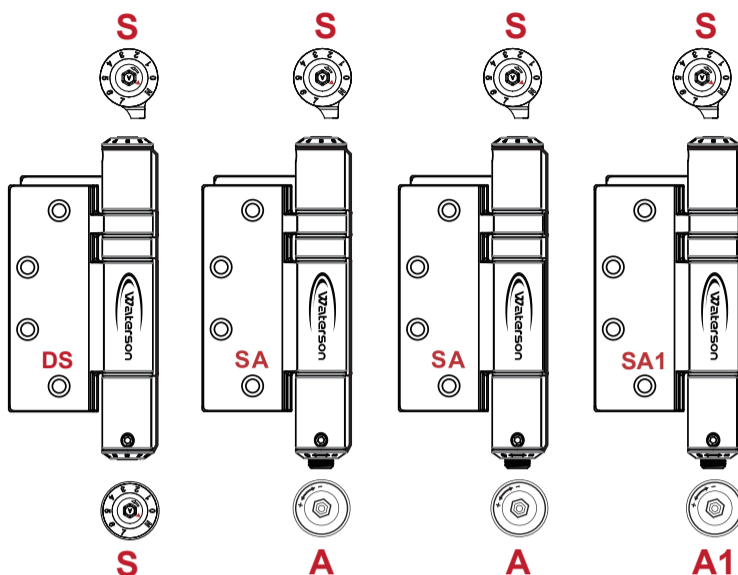
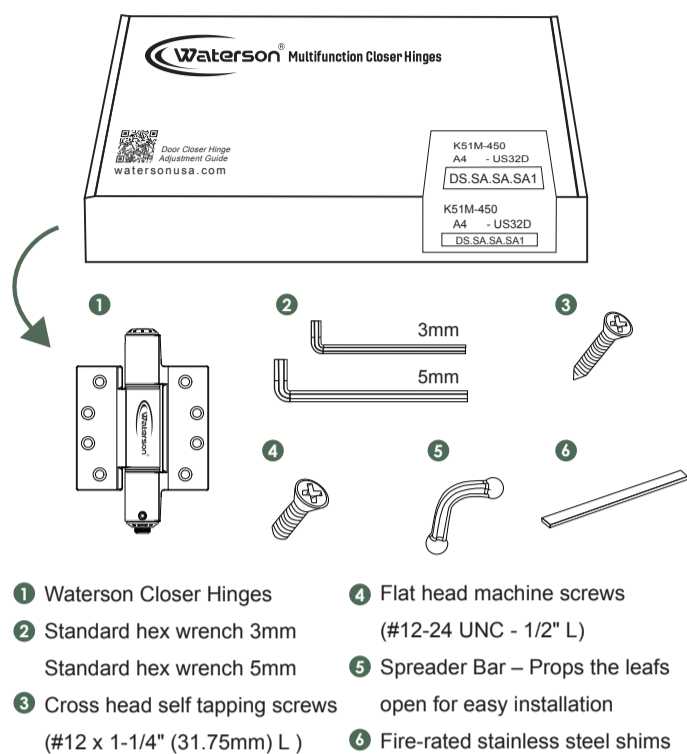




## A.1 Parts Included

Each box includes a complete set of hinges, installation parts and necessary tools.  
**NOTE:** Set A4 includes four different hinges.



## A.2 Adjustment Steps

Follow the steps below to precisely adjust the speed control and self-closing functions.

### 1 BEFORE ADJUSTING

Install door so it swings freely and latches. Hinges should be in the following factory settings upon installation:

**NOTE:** Hinge positions are interchangeable.

### 2 SETTING TENSION

Increase tension one number at a time until door closes and latches from 20°. (Refer to A.3-S)

**NOTE:** Optimal function is achieved when hinges are set similarly. Tension settings are cumulative.

Example: Tension set at 2.

### 3 ADJUSTING & LATCH SPEED

First adjust swing speed control (A) then latch speed control (A1) (Refer to A.3-A and A.3-A1)

Turn (+) faster swing speed  
Turn (-) slower swing speed

Turn (+) faster latch speed  
Turn (-) slower latch speed

### 4 LOCK-IN PLACE

Tighten speed lock-in screws on SA and SA1 hinges to ensure that your settings remain fixed.

**NOTE:** Each hinge has two speed lock-in screws. Tighten at least one.

### FINE ADJUSTMENT

Optimize door performance by adjusting: Swing speed (A), Latch speed (A1), and Spring tension (S).

**ADJUSTMENTS:**

- **Door Slams:** Decrease swing speed, latch speed, or tension.
- **Poor Latching:** Increase swing speed, latch speed, or tension.

**NOTE:** Adjust speed control gradually, making slight changes each time.  
**NOTE:** Increase or decrease spring tension incrementally one number at a time.

## A.3 How To Adjust

Waterson hinge sets are easily adjustable using 3mm and 5mm hex wrenches. See specific adjustment details (S, A, A1, B, H1 & H2) below.

### S TENSION ADJUSTMENT

Use 5mm hex wrench to adjust numerical panel.

**Increase Tension:** Turn (▲) to greater number.  
**Decrease Tension:** Depress and turn to lower number.

**CAUTION:** Setting tension beyond 5 may decrease spring longevity.

### A SWING SPEED ADJUSTMENT

Use 5mm hex wrench to adjust swing speed, which is only adjusted on SA and HA hinge bottoms.

SWING SPEED	Fast	Slow	Stop
DIRECTION	+ ← → -		

Lock speed lock-in screws with 3mm wrench after adjusting.  
Swing Speed Control Nut adjusting with 5mm wrench.

### A1 LATCH SPEED ADJUSTMENT

Use 5mm hex wrench to adjust latch speed, which is only adjusted on SA1 hinge bottom.

LATCH SPEED	Fast	Slow	Stop
DIRECTION	+ ← → -		

Lock speed lock-in screws with 3mm wrench after adjusting.  
Latch speed Control Hex Nut adjusting with 5mm wrench.

### B HOLD OPEN ADJUSTMENT

Hold-open adjustment is only done on SB hinge bottom.

Lock lock-in screws with 3mm wrench after adjusting.  
Hold Open Control Nut adjusting with 5mm wrench.

### H1 ENABLE HYDRAULIC ADJUSTMENT

Enable Function (5mm wrench)

- Turning toward plus (+) one revolution.

Lock-in screw (3mm wrench)

- Slightly loosen side screw.
- Lock side screw.

**NOTE:** You can always reset to factory default by turning to full minus (-) with 5mm hex wrench then repeat steps 1-3.

### H2 HYDRAULIC DAMPER ADJUSTMENT

Use a 3mm hex wrench to adjust hydraulic damper, which is only done on HA or HS hinges.

8mm socket: DO NOT ADJUST  
3mm socket: Damper Adjustment

CLOSING SPEED	Fast	Slow	Stop
HYDRAULIC DAMPER	Min	Middle	Max
DIRECTION	+ ← → -		

**NOTE:** Door will stop if you turn full minus (-), and may result in hydraulic mechanism damage.  
**CAUTION:** Hydraulic mechanism operates best from 0-120°. Opening beyond 120° may damage hinge and violate warranty.