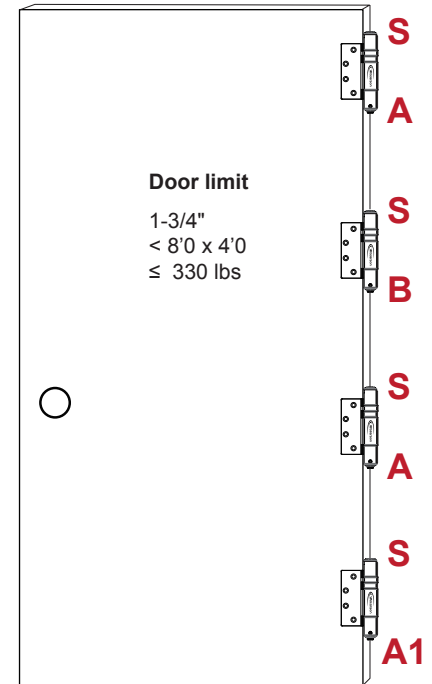
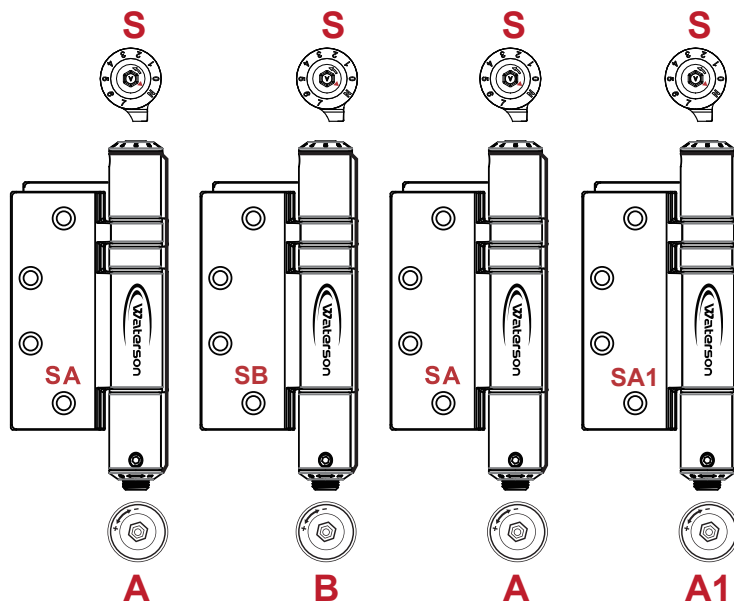
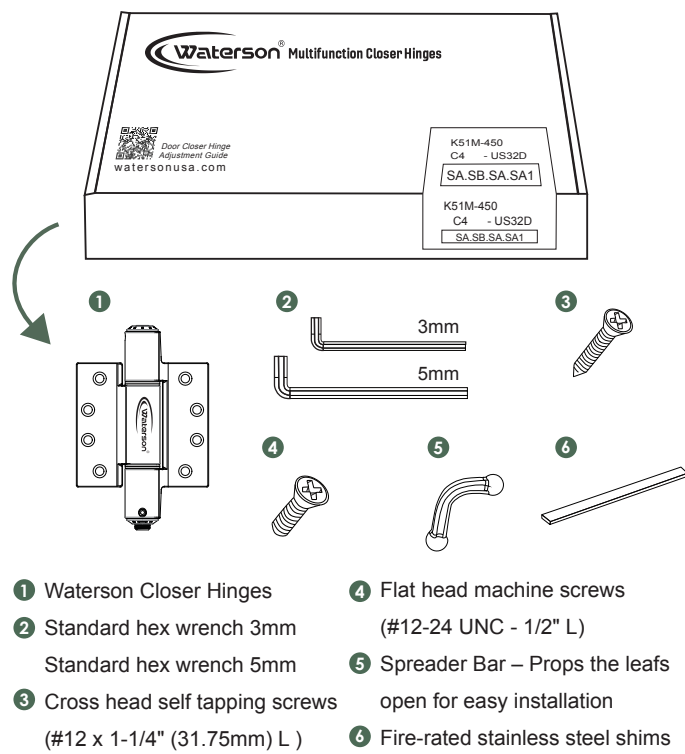




C.1 Parts Included

Each box includes a complete set of hinges, installation parts and necessary tools.
NOTE: Set C4 includes four hinges.



C.2 Adjustment Steps

Follow the steps below to precisely adjust the speed control, self-closing and hold-open functions.

1 BEFORE ADJUSTING
Install door so it swings freely and latches. Hinges should be in the following factory settings upon installation:

NOTE: Hinge positions are interchangeable.

2 SETTING TENSION
Increase tension one number at a time until door closes and latches from 20°. (Refer to C.3-S)

NOTE: Optimal function is achieved when hinges are set similarly. Tension settings are cumulative.

Example: Tension set at 2.

3 ENABLING SWING & LATCH SPEED CONTROL
First adjust swing speed control (A) then latch speed control (A1) to avoid slamming. (Refer to C.3-A and C.3-A1)

Swing Speed Control Hex Nut (A) → Turn (+) faster swing speed
Turn (-) slower swing speed

Latch Speed Control Hex Nut (A1) → Turn (+) faster latch speed
Turn (-) slower latch speed

4 ENABLING HOLD OPEN CONTROL
Adjust hold-open control (B) to hold the door at 90°. (Refer to C.3-B)

Hold-open Control Hex Nut (B)

5 LOCK-IN PLACE
Tighten speed lock-in screws on SA, SA1 and SB hinges to ensure that your settings remain fixed.

NOTE: Each hinge has two speed lock-in screws. Tighten at least one of them.

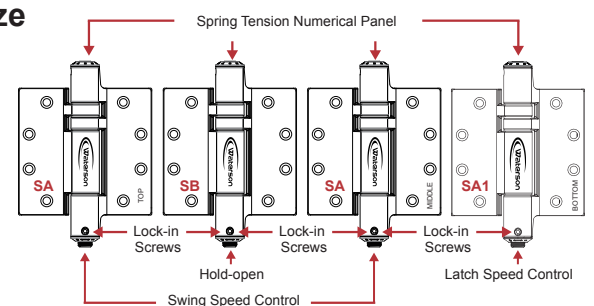
Speed Lock-in Screws

Optional: To customize

Optimize door performance by adjusting: Swing speed (A), Latch speed (A1), and Spring tension (S).

- ADJUSTMENTS:**
- **Door Slams:** Decrease swing speed, latch speed, or tension.
 - **Poor Latching:** Increase swing speed, latch speed, or tension.

NOTE: Adjust speed control gradually, making slight changes each time.
NOTE: Increase or decrease spring tension incrementally one number at a time.



C.3 How To Adjust

Waterson hinge sets are easily adjustable using 3mm and 5mm hex wrenches. See specific adjustment details (S, A, A1, B, H1 & H2) below.

S TENSION ADJUSTMENT
Use 5mm hex wrench to adjust numerical panel.

Increase Tension: Turn (▲) to greater number.
Decrease Tension: Depress and turn to lower number.

CAUTION: Setting tension beyond 5 may decrease spring longevity.

A SWING SPEED ADJUSTMENT
Use 5mm hex wrench to adjust swing speed, which is only adjusted on SA and HA hinge bottoms.

Lock speed lock-in screws with 3mm wrench after adjusting.
Swing Speed Control Nut adjusting with 5mm wrench.

A1 LATCH SPEED ADJUSTMENT
Use 5mm hex wrench to adjust latch speed, which is only adjusted on SA1 hinge bottom.

Lock speed lock-in screws with 3mm wrench after adjusting.
Latch speed Control Hex Nut adjusting with 5mm wrench.

B HOLD OPEN ADJUSTMENT
Hold-open adjustment is only done on SB hinge bottom.

Lock lock-in screws with 3mm wrench after adjusting.
Hold Open Control Nut adjusting with 5mm wrench.

H1 ENABLE HYDRAULIC ADJUSTMENT

Enable Function (5mm wrench)
2 Turning toward plus (+) one revolution.

Lock-in screw (3mm wrench)
1 Slightly loosen side screw.
3 Lock side screw.

NOTE: You can always reset to factory default by turning to full minus (-) with 5mm hex wrench then repeat steps 1-3.

H2 HYDRAULIC DAMPER ADJUSTMENT
Use a 3mm hex wrench to adjust hydraulic damper, which is only done on HA or HS hinges.

8mm socket: DO NOT ADJUST
3mm socket: Damper Adjustment

CLOSING SPEED	Fast	Slow	Stop
HYDRAULIC DAMPER	Min	Middle	Max
DIRECTION	+ ← → -		

NOTE: Door will stop if you turn full minus (-), and may result in hydraulic mechanism damage.
CAUTION: Hydraulic mechanism operates best from 0-120°. Opening beyond 120° may damage hinge and violate warranty.