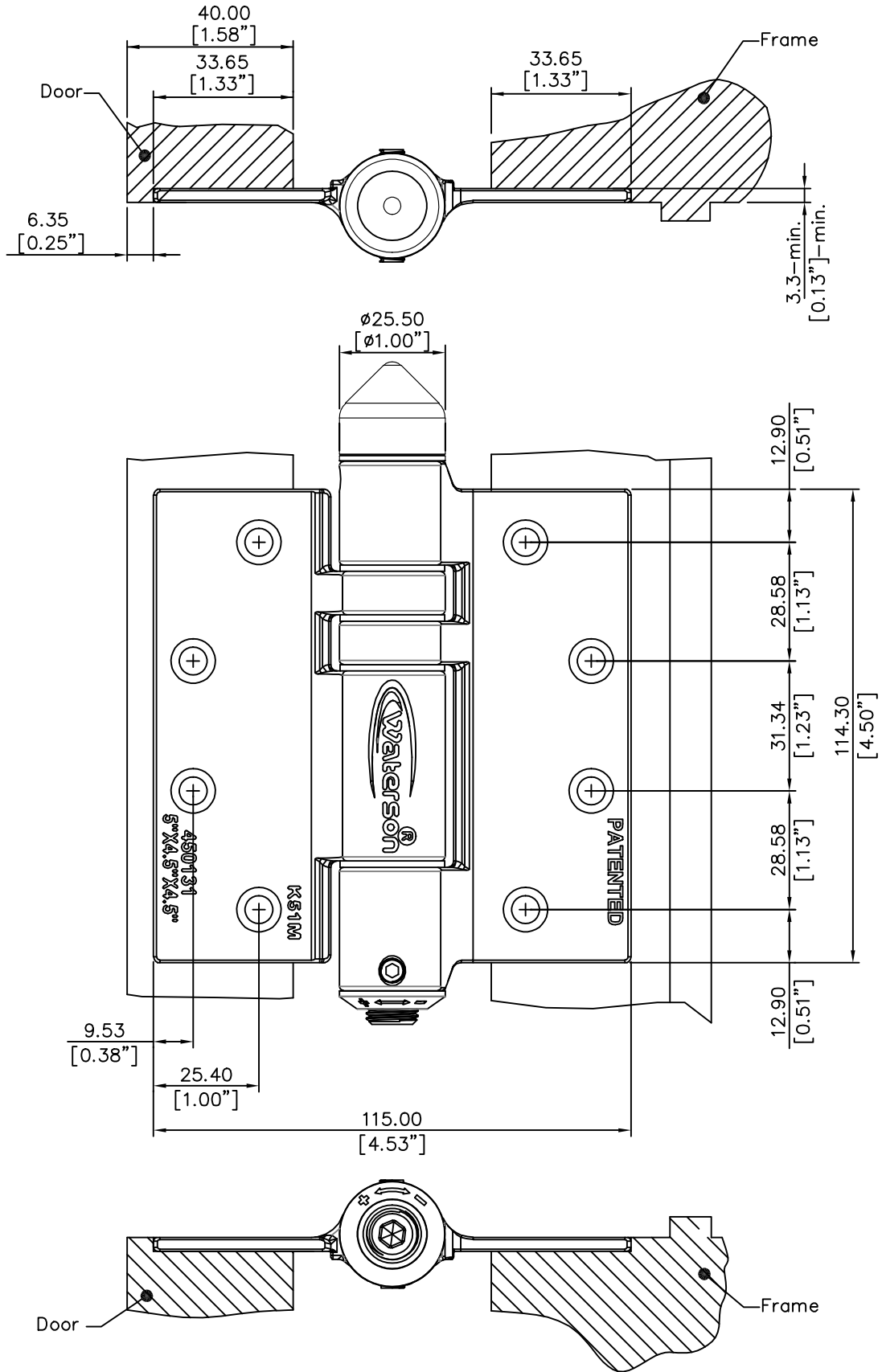


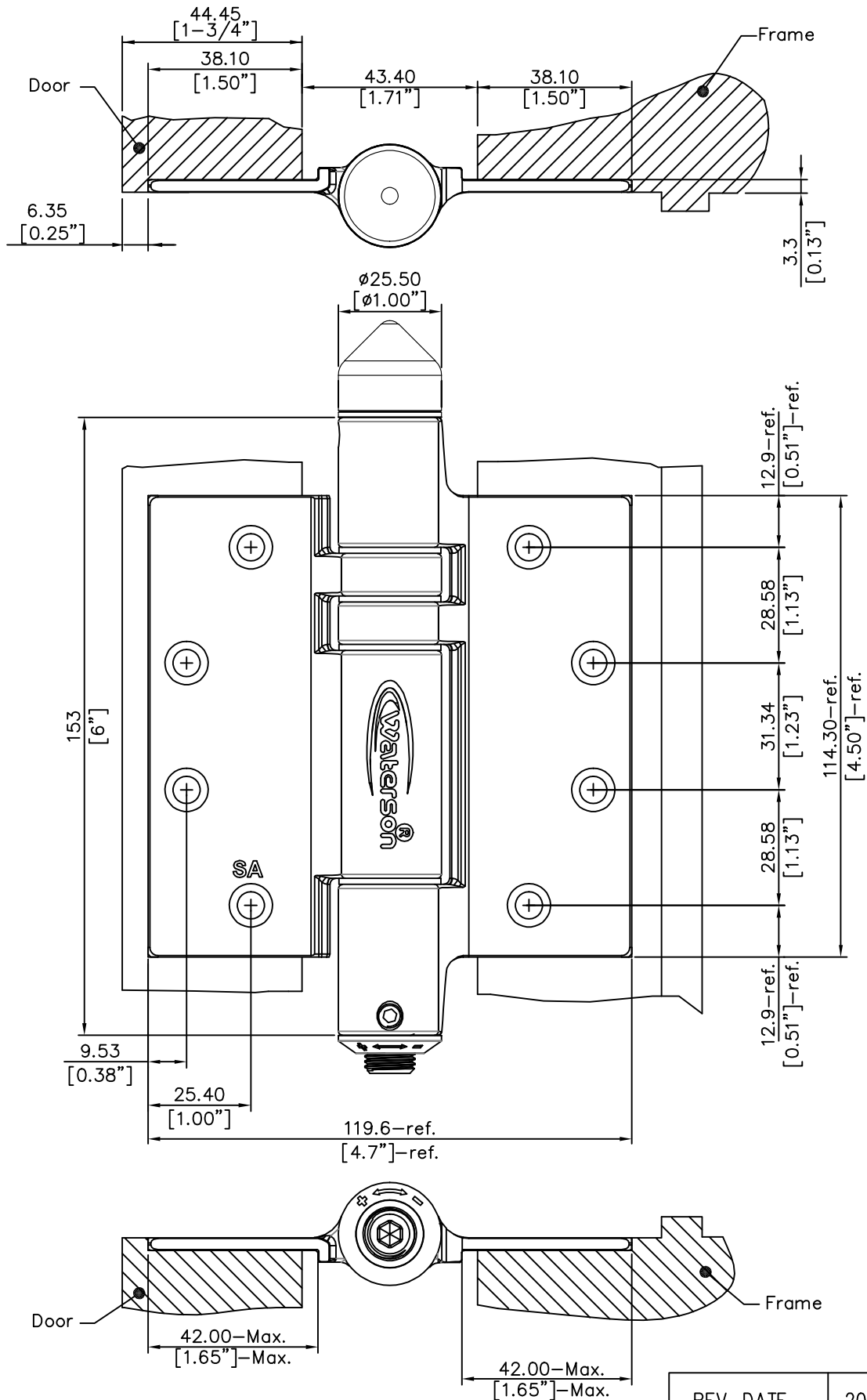
# K51MP-5"x4.5"x4.5"



3in1 Auto Door-Closer Hinge  
Hinge@waterson.com

NAME: 3in1 Auto Door-Closer Hinge		Material: 304 Stainless steel	
Pivot Height: (5 KNUCKLES)	Template Size: 4.5"x4.5"	Standard: ANSI A156.7	
Model NO.: 450131	Serial NO.: K51MP	Door thickness: 40mm	

K51MP-6"x4.5"x4.5"



REV. DATE	2018-NOV-28
-----------	-------------



3in1 Auto Door-Closer Hinge  
Hinge@waterson.com

NAME: 3in1 Auto Door-Closer Hinge		Material: 304 Stainless steel	
Pivot Height: (5 KNUCKLES)	Template Size: 4.5"x4.5"	Standard: ANSI A156.7	
Model NO.: 450131	Serial NO.: K51MP	Door thickness: 44.45mm (1-3/4")	